

BUILDERS BRACKETS RANGE

A broad range of structural brackets specifically designed and fabricated from high grade materials for use in all types of reliable connection methods.

FEATURES AND BENEFITS

SIMPLE: Broad range to suit most types of common site connections.

FAST: Bolt fix using standard on site tools.

DURABLE: 4mm and 5mm thick steel, Hot Dipped Galvanised or Stainless Steel 304.

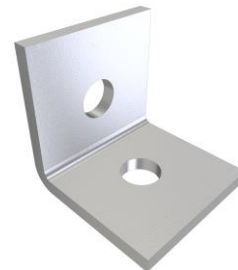
SPECIFICATIONS

PRODUCT CODE	PBB*
STEEL	G250 or equivalent and Stainless Steel 304*
THICKNESS	4mm* and 5mm*
CORROSION RESISTANCE	Hot Dipped Galvanised or Stainless Steel 304
FASTENERS REQUIRED	Bolt Fix*
HEIGHT	Refer to specific bracket
WIDTH	Refer to specific bracket

*Refer to specific product for code and fixing methods, steel thickness and steel type available for each product.

At the time of print, this product is NOT subject to any known warnings and bans found in Building Act 2004.

PBB8555



PBB8515



PBB0140



PBB0240



DURABILITY

Pryda Builders Brackets are Hot Dipped Galvanised to standard AS/NZS 4680, as referenced in Table 4.2, NZS 3604:2011.

STORAGE AND HANDLING

Prior to use, the Pryda products shall be stored in a weatherproof environment and protected from moisture. Care must be taken to avoid any damage to the surface of the product protective galvanised coating and profile that may impact the performance.

DESIGN CAPACITIES

Pryda PBB structural brackets are supplied as individually described with product dimensions, hole geometry, and fabrication material specifics.

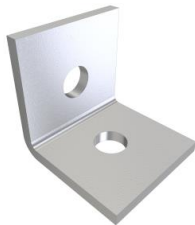
Design capacities can be derived from:

- Engineering first principles by the user/purchaser consulting project Engineer for each component and its intended design.
- The characteristic strength of bolts in timber or steel , using the relevant design code for the intended load directions based on the connection geometry and selected components.

Before use, the end user/purchaser is responsible for checking the suitability and seeking Engineering advice from his/her consulting project structural Engineer of any selected components and deem the components "fit for purpose" for its intended use.

AVAILABLE BUILDERS BRACKET RANGE

ANGLE BRACKETS



PBB8555



PBB8515



PBB0140



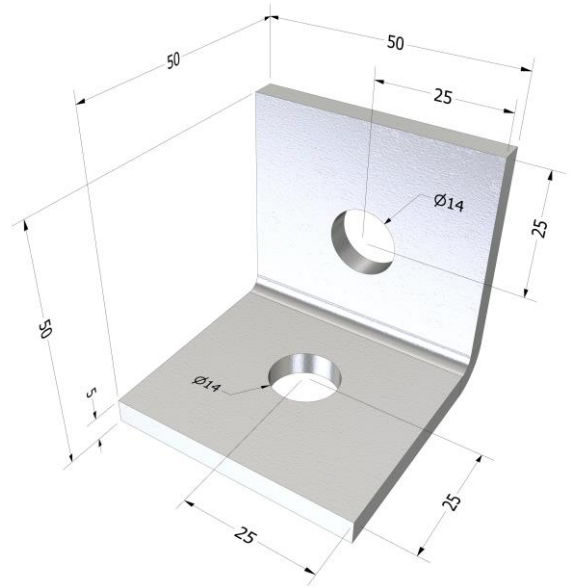
PBB0240

PBB8555

STEEL GRADE: Grade 250 or Equivalent
STEEL THICKNESS: 5mm
CORROSION PROTECTION: HDG to AS/NZS 4680
FASTENER SIZE: M12 BOLT OR SIMILAR

PBB8555/SS

STEEL GRADE: Stainless Steel 304
STEEL THICKNESS: 5mm
CORROSION PROTECTION: Stainless Steel
FASTENER SIZE: M12 BOLT OR SIMILAR

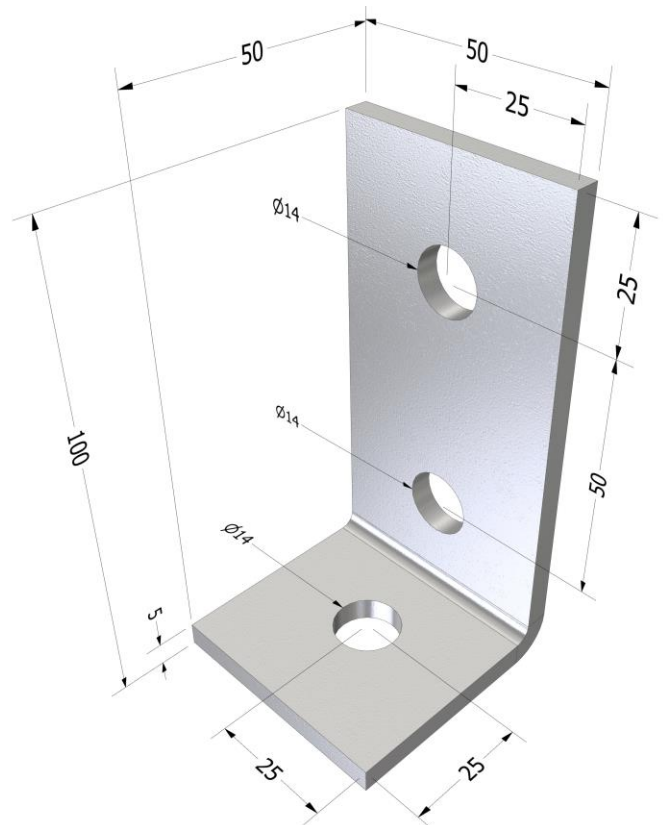


PBB8515

STEEL GRADE: Grade 250 or Equivalent
STEEL THICKNESS: 5mm
CORROSION PROTECTION: HDG to AS/NZS 4680
FASTENER SIZE: M12 BOLT OR SIMILAR

PBB8515/SS

STEEL GRADE: Stainless Steel 304
STEEL THICKNESS: 5mm
CORROSION PROTECTION: Stainless Steel
FASTENER SIZE: M12 BOLT OR SIMILAR

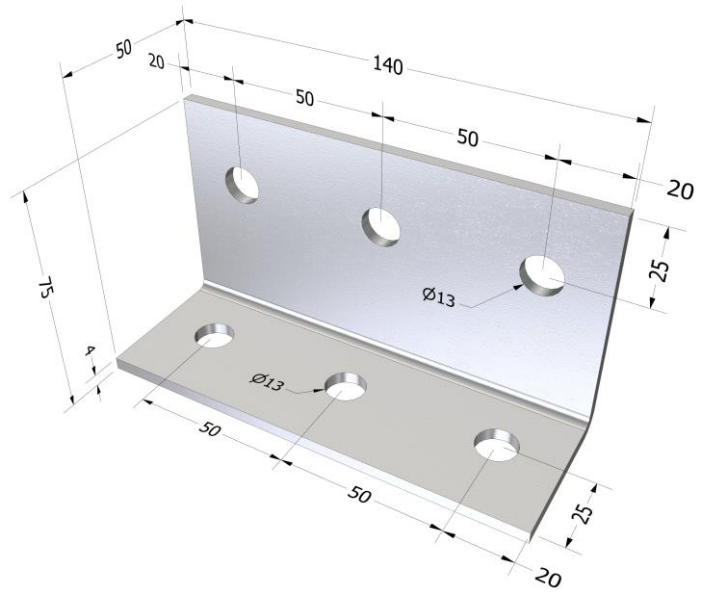


PBB0140

STEEL GRADE: Grade 250 or Equivalent
STEEL THICKNESS: 4mm
CORROSION PROTECTION: HDG to AS/NZS 4680
FASTENER SIZE: M12 BOLT OR SIMILAR

PBB0140/SS

STEEL GRADE: Stainless Steel 304
STEEL THICKNESS: 4mm
CORROSION PROTECTION: Stainless Steel
FASTENER SIZE: M12 BOLT OR SIMILAR

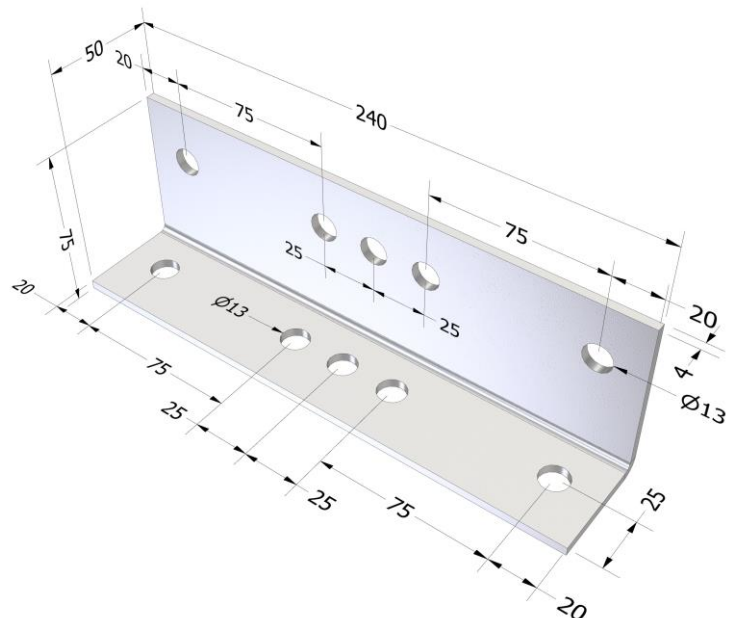


PBB0240

STEEL GRADE: Grade 250 or Equivalent
STEEL THICKNESS: 4mm
CORROSION PROTECTION: HDG to AS/NZS 4680
FASTENER SIZE: M12 BOLT OR SIMILAR

PBB0240/SS

STEEL GRADE: Stainless Steel 304
STEEL THICKNESS: 4mm
CORROSION PROTECTION: Stainless Steel
FASTENER SIZE: M12 BOLT OR SIMILAR



Contact Details	
Manufacture location	Overseas
Legal and trading name of manufacturer	Shanghai Zenith International Trading Company Co LTD
Legal and trading name of importer	Pryda New Zealand - a Division of ITW New Zealand
Importer address for service	23-29 Poland Road, Wairau Valley, Auckland, 0627, New Zealand
Importer website	pryda.co.nz
Importer email	info@prydaanz.com
Importer phone number	0800 88 22 44
Importer NZBN	9429039833129